

## MODEL. PALLET-INVERTER DC3000-15



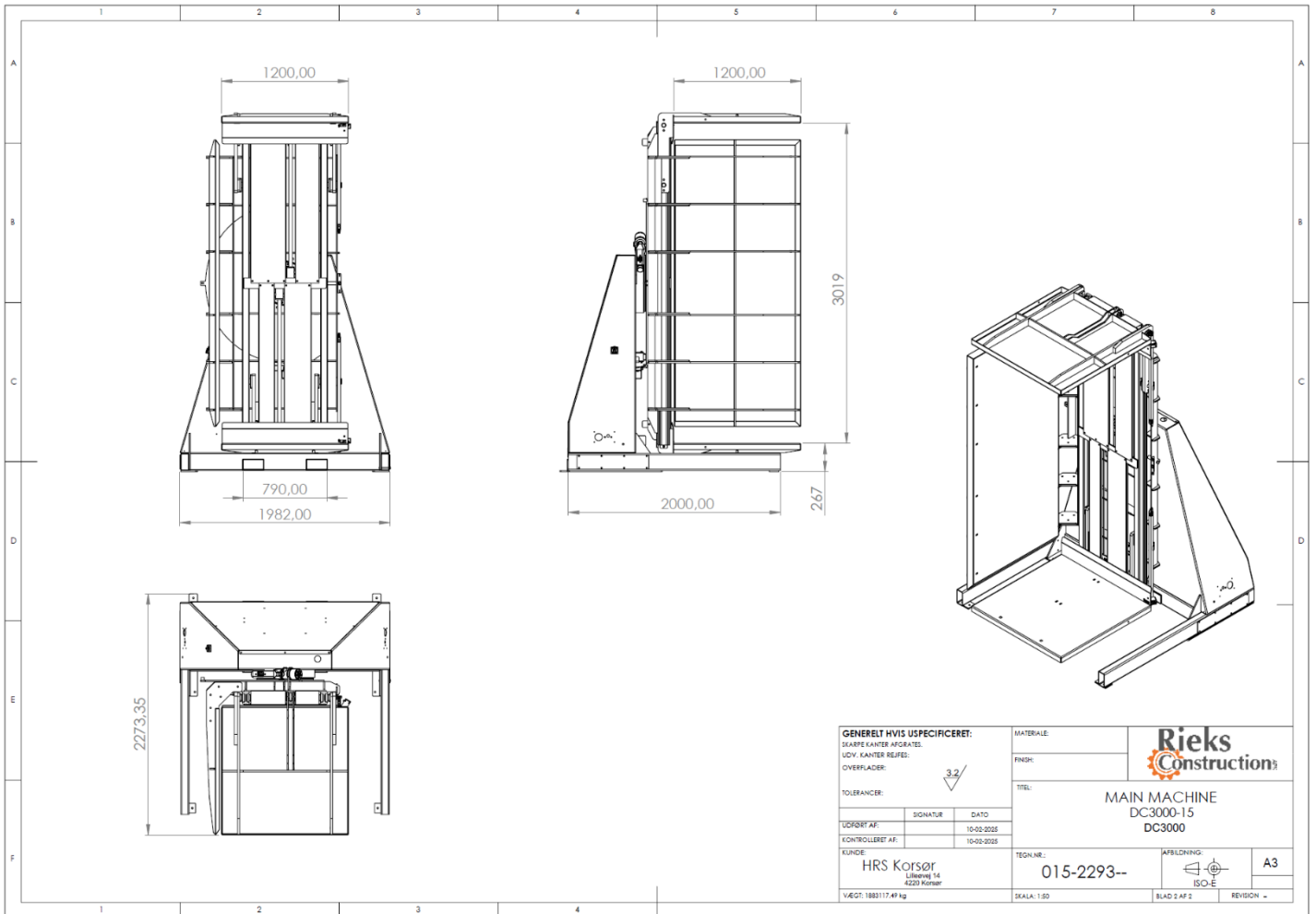
### TECHINCAL DATA:

Capacity.	Max.	1500kg
High Opening	Max.	3000mm
High Opening	Min.	500mm
Floor-level, optional (Inc. Ramp)		Moves platform to floor-level.
Platform dim.		1200mm*1200mm
Machine width.		2000mm
Machine length.		2300mm
Machine high.		3400mm
Machine Weight.		2700kg
Operation-Standard.		Manual Push-button Optional automatic solution
Cycle time.		Up to. 30 pallets/hour
Voltage.		400V - 3 faces + N + PE



Samzon Pallet-Inverter DC model (Dual clamp) is a stationary pallet inverter machine with two movable platforms. This machine is mainly used to exchange pallets to new or for removing paper spacer or freezer spacer. The pallet is fed into the machine using a pallet truck or pallet jack. The machine can either 180-degrees or stop at desired position depending on your needs. To remove paper spacer or freezer spacer, the machine is rotated from 0 to 90-degrees, pressure from the platforms is alleviated to allow for removal of spacers. Changing pallets, either because of a defect pallet or swapping it to a plastic pallet, the new pallet is placed on top of the product, the platforms press down on the product, rotate 180-degrees, and the product is now standing on its new pallet. This does require manual pallet handling, to place the new pallet on top - to avoid manual lifts a different type of pallet-inverter is recommended. The pallet inverter can be delivered with a variety of extra equipment and surface treatments.

## DC3000-15 STANDARD



## OPTIONS.

### **Automatic function (including safety light barriers and safety fence)**

With automatic function the machine is equipped with PLC and the start of the machine is done by pressing one start button. The machine is also equipped with HMI touch panel with different features like; main page for operation, settings, alarm-list, and choice of language.

### **Sensor clamping system.**

With this new system, it is possible to achieve very precise adjustment of clamping force on the platforms, which means that it is possible to get a clamping pressure all the way down to a few kilos, but also high pressure, if needed.

All can easily be adjusted from the HMI operation panel.

### **Safety light barriers.**

Including special protection columns, with multi adjustable function, for easy installation and protection of barriers.

### **Safety fence.**

Height 2200mm from floor level, Powder coated.

### **Internal plates Stainless 304.**

Stainless plates against product.

### **External start, wireless remote.**

Start of machine from wireless remote, makes it possible for the operator to start the machine from the truck. *(Require automatic function option)*

### **Surface treatment, mainframe.**

Standard Powder coating, Galvanized or Stainless 304.

### **Truck protection.**

Truck protection column used to protect machine, safety fence or light barriers against damage from truck driver.

### **Sparepart-kit.**

Recommended.