



Capacity. MAX.	1200kg
High Capacity Min.	2300mm
Platform size	1300mm x 800mm
Max Pallet size	1200mm x 1200mm
Machine width.	1600mm
Machine length.	2250mm
Machine high.	2150mm
Machine Weight.	1200kg
Operation.	Manual operated by bush button.
Cycle time.	Approx. 30 pallets/hour
Voltage.	24V - 300Ah

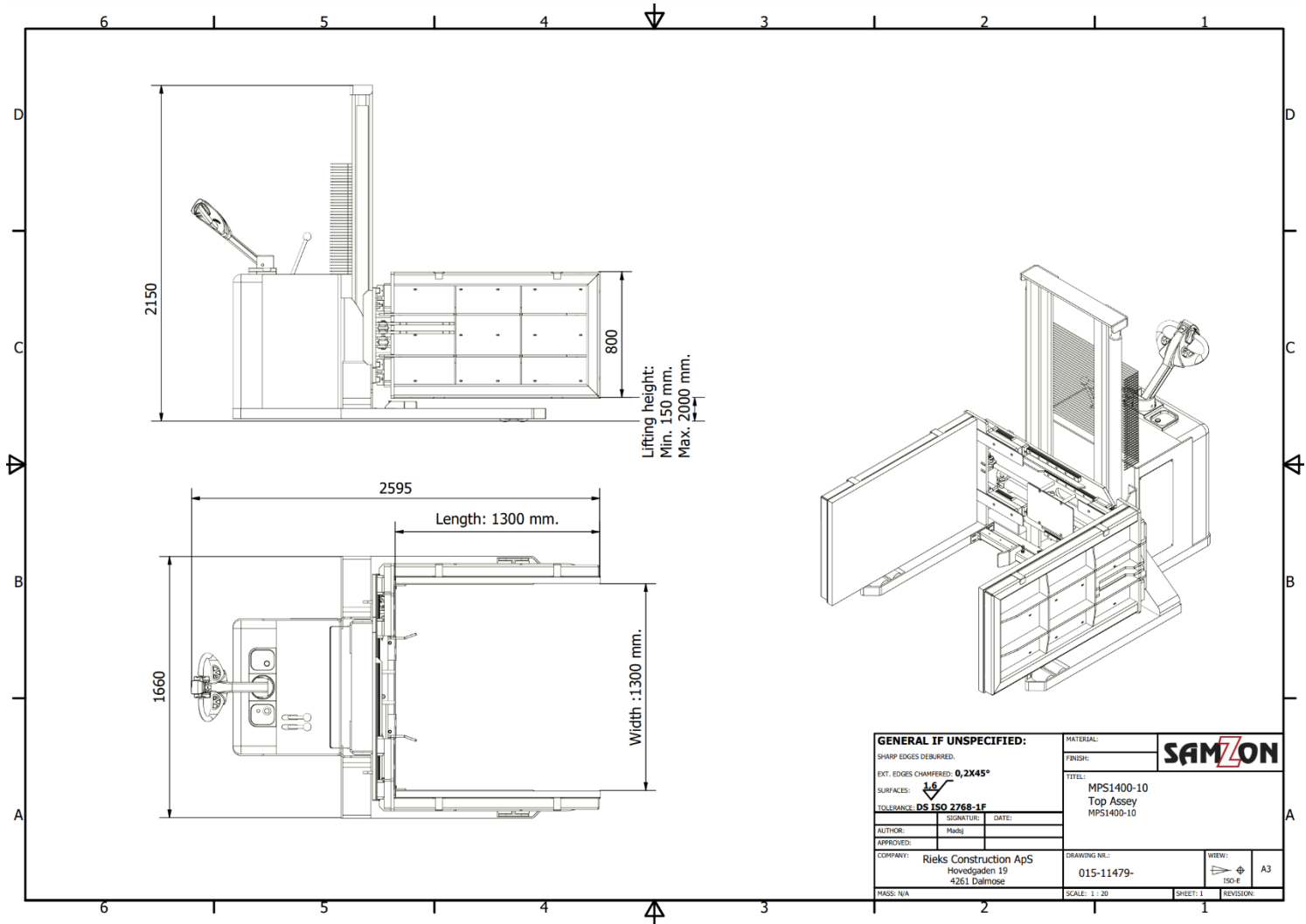
Samzon MPS is a mobile pallet inverter mounted with clamping-unit and is used for moving existing product to a new pallet or when it's needed to stack product on each other.

The WB version is constructed as a "wide base" version, 1300mm inside legs of the main frame, so it's possible to run outside the pallet.

A major advantage with this machine is that the platforms can close-down to 320mm, which means the Samzon MPS can handle pallets up to 1200m wide and approx. 1000kg.

Samzon MPS clamps around the product with platforms that are covered with special thick rubber plates, and now the clamping-unit can lift the product for the pallet and up to 2300mm height. The bottom platform is then lowered back down, the platforms open, and the products has been placed on a new pallet.

- The Mobile inverter can move to the pallet where the pallet is placed.
- Servo-steering - Easy movement of steering wheel.
- Forks movement synchronized.
- Battery charger incorporated as standard.
- Can be delivered with a variety of extra equipment.



Options.

Second Battery Package.

Including 24V - 300Ah Lead Acid + battery charger.

This option is also including trolley for easy change of battery, and this is easy rolled from the machine to the trolley, due to the rollers in the machine.

Adjustable pressure-switch.

Adjustment of clamp pressure.

Manuel adjusted by hand and possible to see the indicator on the switch.

External start, wireless remote.

Start of machine from wireless remote, makes it possible for the operator to start the machine in front of the machine, so it's easier to see the pallet and product.

Extra 40mm Special Foam side-plates 1300*800mm for clamping-unit

Set of two rubber pieces mounted on thin steel plate.

Easy to change.

Sparepart Kit.

Recommended.